



FINISHING TOUCH® FLAWLESS®

FACIAL HAIR REMOVER

Thank you for your purchase of Finishing Touch® Flawless®, the easy and convenient facial hair remover.

Installing / Changing Battery

- Remove the Finishing Touch® Flawless® cap (Image 1).
- Grab the upper section of the unit with one hand, the bottom half with the other, and pull apart (Image 2) to reveal the battery chamber.
- Place 1x 1.5V AA alkaline battery (not included) into the compartment, making sure the positive pole (+) is facing the bottom of the unit.
- Slide/snap the unit's bottom casing back into place (Image 2).

Battery Safety and Information

- Non-rechargeable batteries are not to be recharged.
- Rechargeable batteries are only to be charged under adult supervision.
- Rechargeable batteries are to be removed from the product before being charged
- Different types of batteries or new and used batteries are not to be mixed.
- Batteries are to be inserted with the correct polarity.
- Always make sure the battery compartment is secure.
- Exhausted batteries are to be removed from Finishing Touch® Flawless®.
- The supply terminals are not to be short-circuited.

How to Use

- Remove the Finishing Touch® Flawless® cap (Image 1).
- Slide the switch located on the side of the unit upward into the "ON" position (Image 3). The light will automatically turn on when the unit is "ON".
- Gently press the head of the unit flat against your skin. The unit should not be on an angle. Proceed making small circular motions to remove unwanted hair (Image 5).

NOTE: It is normal for the head to become warm with use.

Cleaning (be sure unit is off)

- Twist the rotating hair removal head counter-clockwise and lift off (Image 4).
- After each use, clean the head by using a brush (included) to wipe away the hair residue.
- Empty any hair from the body of the Finishing Touch® Flawless® unit by turning it over and gently tapping the sides.
- To put the hair removal head back on the unit, line up the "groove" indicators on the cap with those on the unit and twist clockwise (Image 4).

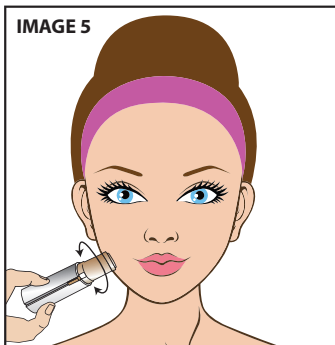
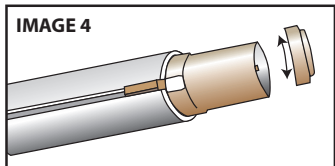
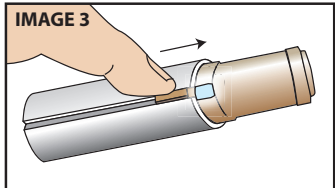
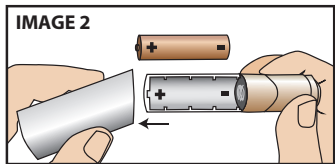
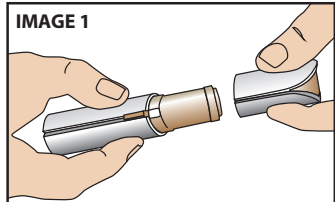
Tips & Pointers

- For superior results, use on hair ¼" in length or less.
- If the unit begins to slow down, clear the hair removal head and body of any hair residue. If the unit is still running slow change the battery.
- Gentle enough to use every day.
- For airbrush-like make-up application, use daily.

NOTE: Prior to first use, test the Finishing Touch® Flawless® on a small area. If any sensitivity or allergic reactions occur, discontinue use immediately. Do not use your Finishing Touch® Flawless® on sensitive or irritated skin.

Replacement Head

For optimal results it is recommended that you replace your Finishing Touch® Flawless® head every 6 months. The head may need to be replaced sooner if the Finishing Touch® Flawless® loses performance or if the head becomes chipped or damaged in any way. Please contact JML customer services for replacement heads.



Warnings

- Keep out of reach of children.
- This is not a toy. Children shall not play with this product.
- Do not use on irritated skin. Discontinue use if skin irritation occurs.
- Do not use on sensitive eye areas. Do not use on eyelashes.
- Avoid direct eye exposure. Do not look directly into light during use.
- Do not rinse trimmer head under water.
- Do not submerge unit under water.
- Store in a cool dry place when not in use.



USER GUIDE

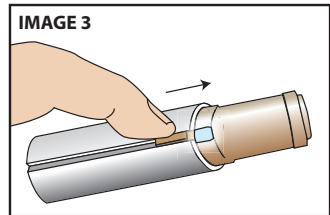
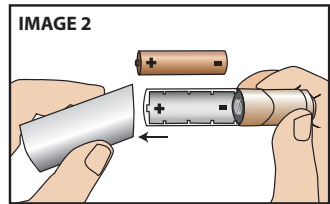
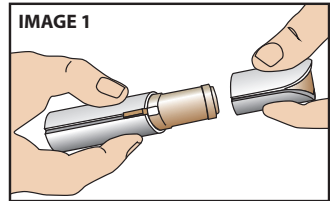
FINISHING TOUCH®

FLAWLESS®

FACIAL HAIR REMOVER

QUICK START GUIDE

- 1. Remove cap. (Image 1)**
- 2. Install battery: Grab the upper section of the unit with one hand, the bottom half with the other, and pull apart. (Image 2)**
- 3. Turn Unit On: Just slide gold switch upward. (Image 3)**
- 4. To Remove Hair: Use in a circular motion. (Image 4)**



U.S. & International Patents Pending
Made in China • ©JohnMillsLtd/VG/01.18/IT/B

Guarantee: This product is unconditionally guaranteed for one year against all defects of workmanship and materials. This guarantee does not affect your statutory rights. If you have any problems or queries about this product please contact JML customer services.



Distributed by JML
JML, Unit 1 Eastside, Port of Tyne
South Shields, NE33 5SP

Customer Services
UK: 0800 781 7831 (Freephone)
ROI: 041-978 0003 (Local rate)
Email: info@JMLgroup.co.uk
www.JMLdirect.com